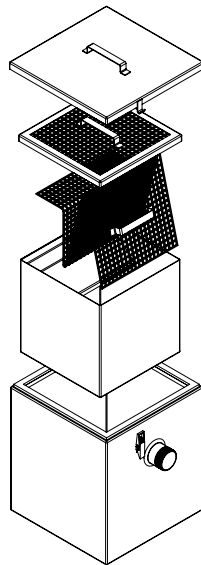
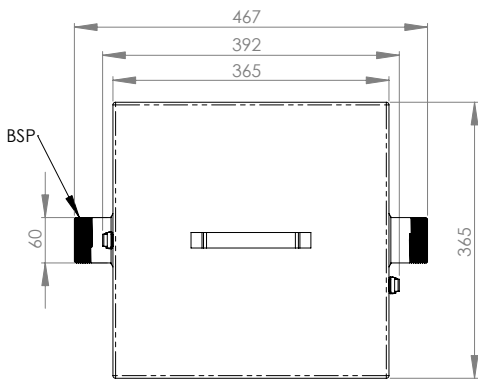
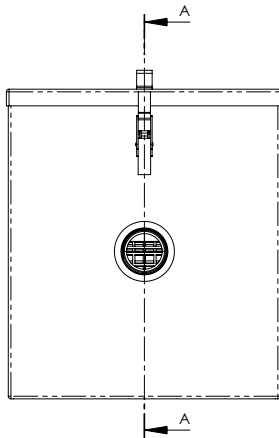


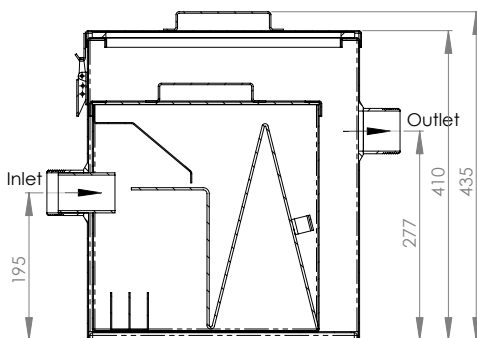
Top



Front



Cross-section A-A



Product Code:
M-PL-3

This plaster trap features removable filter baskets and a removable lid with a handle. It is typically used in schools, art studios, medical and educational facilities.

Features and Benefits:

- Manufactured with 304 or 316 grade 1.2mm stainless steel
- 50mm BSP inlet and outlet
- Typically used in schools, art studios, medical and educational facilities
- Removable filter baskets
- Removable lid