



PRODUCT CODE:

FH-27

FH-28



PRODUCT CODE:

FH-29

FH-30

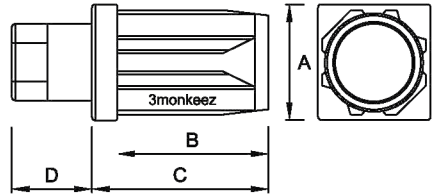


PRODUCT CODE:

FH-31

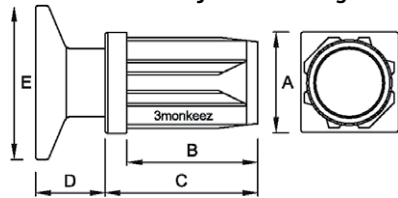
FH-32

**Zinc Die-Cast Chrome Plated Adjustable Hex Foot - Square Tube**



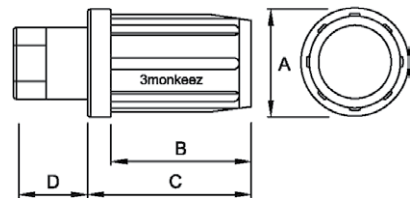
PRODUCT CODE	A	B	C	D	ADJ. HEIGHT
FH-26	25	32	37	10	25
FH-27	32	43	50	23	33
FH-28	38	43	50	23	33

**Zinc Die-Cast Chrome Plated Adjustable Flanged Foot - Square Tube**



PRODUCT CODE	A	B	C	D	E	ADJ. HEIGHT
FH-29	25	32	37	10	30	25
FH-30	32	43	50	23	50	33

**304 Grade Stainless Steel Clad Adjustable Hex Foot - Round Tube**



PRODUCT CODE	A	B	C	D	ADJ. HEIGHT
FH-31	38 *	43	51	24	33
FH-32	50 *	46	56	28	35

\* This represents tube size

To fit tube of 1.2mm or 1.6mm wall thickness.

All measurements in mm.

Details accurate at time of print. Whilst all care has been taken in compiling this information, designs & dimensions shown are indicative only and should not be relied upon without prior approval.

