



Hand fabricated bowls featuring a raw edge ready for welding.

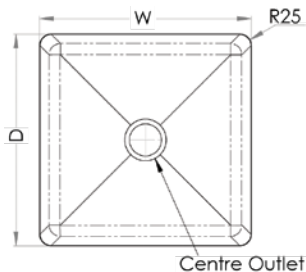
FEATURES & BENEFITS:

- Standard outlet sizes as per chart
- Directional satin polish
- 127mm outlet available on request. This outlet suits the SSBW-1 Scraptrap
- Centre outlet
- Raw edge ready for welding
- Cross breaks to the outlet
- Sound deadening material on bottom
- One piece construction

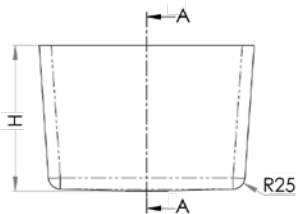
In stock and available for immediate delivery

Custom sizes available on request - lead times apply

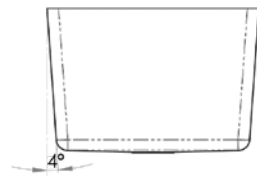
Top



Front



Cross Section



PRODUCT CODE	W (mm)	D (mm)	H (mm)	OUTLET	CAPACITY
HF10	300	250	200	50	13.3L
HF12	300	300	200	50	16.5L
HF13	350	300	300	90	27.5L
HF14	400	350	300	90	37.5L
HF11	400	400	300	90	43.3L
HF15	450	300	300	90	36L
HF453520	450	350	200	90	31.5L
HF16	350	450	300	90	42.5L
HF20	450	400	300	90	49L
HF17	450	450	300	90	55.5L
HF18	530	380	300	90	55.3L
HF21	550	450	300	90	68.5L
HF505040	500	500	400	90	100L
HF19	600	450	300	90	75L
HF22	800	500	300	90	113L

Details accurate at time of print. Whilst all care has been taken in compiling this information, designs & dimensions shown are indicative only and should not be relied upon without prior approval.