



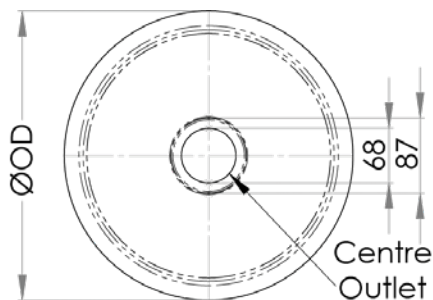
These round pressed sink bowls are constructed from 304 grade stainless steel and are suitable for top mount and under mount applications. They also feature a mirror polish finish.

#### FEATURES & BENEFITS:

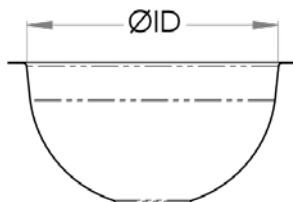
- Constructed from 1mm 304 grade stainless steel
- 20mm flange
- 50mm centre waste
- Mirror polish finish

*In stock and available for immediate delivery*

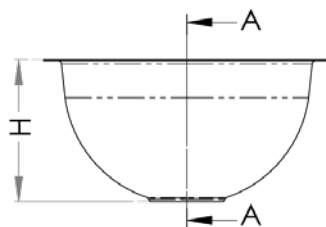
Top



Front



Cross Section



PRODUCT CODE	OD	ID	H	OUTLET	CAPACITY
RB300	340	300	165	50	8.3L
RB385	425	385	165	50	10.3L
RB445	485	445	165	50	15L

*Details accurate at time of print. Whilst all care has been taken in compiling this information, designs & dimensions shown are indicative only and should not be relied upon without prior approval.*